

Product Technical Dossier

Product	Green Tea PE 98%
CCL Product Code	P14476

Specification Details

Identification	Specification
Assay	Positive Polyphenols Min 98% (UV) Catechins Min 60% (HPLC) EGCG Min 50% (HPLC) Caffeine Max 1% (HPLC)
Appearance	Powder
Colour	Light Brown to Brown
Aroma	Characteristic
Flavour	Characteristic
Sieve Analysis % passed	Min 95% pass 80 Mesh
Loss on Drying	Max 8%
Ash	Max 5%
Bulk Density	0.30~0.65g/ml
Tapped Density	0.55~0.85g/ml
Residual Ethyl acetate	≤50ppm

Microbiological Limits

Total Viable Count	Max 10,000cfu/g
Yeasts & Moulds	<100cfu/g
E. Coli	Negative/10g
Salmonella	Negative/25g
Coliforms	<10cfu/g

Heavy Metal Limits

Total Heavy metals	Max 10ppm
Lead (Pb)	Max 1ppm
Cadmium (Cd)	Max 1ppm
Mercury (Hg)	Max 0.1ppm
Arsenic (As)	Max 1ppm
Aluminium (Al)	Information only*

Product Code: P14476

Version: 1

Page 1 of 7

Committed to meeting quality standards. BRC Food Safety . FEMAS . FSMA . Informed Manufacturer. Soil Association
Organic . Halal . Kosher .

For a full range of our accreditations visit www.cambridgecommodities.com/quality-accreditations/certificates



+44 (0) 1353667258 | www.cambridgecommodities.com | enquiries@cambridgecommodities.com

*Currently, there is no EU legislation on Aluminium content for the food products. Scientists at Europe's food safety watchdog (The EFSA Journal (2008) 754,1-34) have assessed the safety of aluminum from all sources in food and established a Tolerable Weekly Intake (TWI) of 1 milligram of aluminum per kilogram of body weight. So, for an adult person which weights 50 kg TWI = 50 mg Al and for person whose weight is 70 kg TWI = 70 mg Al. Therefore, we ask you to assess this product in relation to its intended usage.

Additional Technical Information

Raw Material Full Botanical / Chemical Name	<i>Camellia sinensis</i>
Part Used	Leaf
The material is Food Grade	Yes
Ratio of Material	Approximately 16–25:1
Solvent used	Water & ethyl acetate
Cultivated / Wild	Cultivated
Harvest Method	Manual
Harvest Period	February to October
Harvest Stage (age of the plant)	Young to Mature
Country of Origin	China
Country of Manufacture	China/USA
Solubility in Alcohol	Partial Soluble in ethanol
Solubility in Water	Partial Soluble in water
Shelf Life from Date of Manufacture	Min 2 years
Suitable for Vegetarians?	Yes
Suitable for Vegans?	Yes
Storage Conditions	This material is to be stored in a tightly sealed bag/container and to be kept in a cool place away from moisture and direct sunlight.

Composition Origin, Function and Percentages

Ingredients	Function	% Composition	Source
Green tea extract	Active ingredient	98%	<i>Camellia sinensis</i>
Silica	Anti-caking Agent	2%	Mineral

Please note that surveillance testing may mean that not all the parameters stated on this specification are tested for every batch.

The allergen information is supplied by the manufacturer, we have not tested for each individual allergen to ensure they are not present. The information given is based on a documented risk assessment and is accurate to the best of our knowledge. If you intend to make a voluntary "free from" claim on your pack, additional testing may need to be carried out. For technical and labelling guidance, you should always speak to the competent authority for the market or member state in which the final products are placed.

Product Code: P14476

Version: 1

Page 2 of 7

Committed to meeting quality standards. BRC Food Safety . FEMAS . FSMA . Informed Manufacturer. Soil Association Organic . Halal . Kosher .

For a full range of our accreditations visit www.cambridgecommodities.com/quality-accreditations/certificates



+44 (0) 1353667258 | www.cambridgecommodities.com | enquiries@cambridgecommodities.com

Allergens	Product Contains YES/NO	Listed Item on Site at Manufacturer YES/NO	Where applicable, is there risk of cross-contamination? YES/NO or N/A
Peanuts and Peanut Derivatives (including possible cross contamination)	NO	NO	N/A
Nut and Nut Derivatives <i>Almond (Amygdalus communis L.), Hazelnut (Corylus avellana), Walnut (Juglans regia), Cashew (Anacardium occidentale), Pecan nut (Carya illinoensis (Wangenh.) K. Koch), Brazil nut (Bertholletia excelsa), Pistachio nut (Pistacia vera), Macadamia nut and Queensland nut (Macadamia ternifolia)</i>	NO	YES	Processed on same line, controls in place to minimise the risk of cross contamination
Sesame Seeds and Sesame Seed Derivatives	NO	YES	Different line
Milk and Milk Derivatives (including lactose)	NO	YES	Processed on same line, controls in place to minimise the risk of cross contamination
Egg and Egg Derivatives	NO	NO	N/A
Cereals and Derivatives containing OR POTENTIALLY CONTAMINATED WITH Gluten <i>(wheat, wheatgrass, faro, freekeh, spelt, kamut, rye, oats, barley, barleygrass)</i>	NO	YES	Processed on same line, controls in place to minimise the risk of cross contamination
Soya and Soya Derivatives	NO	YES	Different line
Lupin and Lupin Derivatives	NO	NO	N/A
Mustard and Mustard Derivatives	NO	YES	Processed on same line, controls in place to minimise the risk of cross contamination
Celery or Celery Derivatives (including Celeriac)	NO	YES	Processed on same line, controls in place to minimise the risk of cross contamination
Fish and Fish Derivatives	NO	NO	N/A
Molluscs and their Derivatives	NO	NO	N/A
Crustaceans and their Derivatives	NO	NO	N/A
Sulphur Dioxide and Sulphites (E220, E228) at levels > 10mg/kg or 10mg/litre	NO	YES	Processed on same line, controls in place to minimise the risk of cross contamination

Additives / Contaminants / Dietary Requirements / Intolerances	Product Contains YES/NO	Listed Item on Site at Manufacturer YES/NO	Where applicable, is there risk of cross-contamination? YES/NO or N/A
Additives / E Numbers	YES	YES	Silica
Antioxidants	NO	NO	N/A
Ethylene Oxide	NO	NO	N/A
Gelatine	NO	NO	N/A
Flavourings (Artificial / Nature Identical / Natural / Smoked)	NO	NO	N/A
Maize / Corn and any Derivatives	NO	NO	N/A
Legumes / Pulses	NO	NO	N/A
Rice and Rice Derivatives	NO	NO	N/A
Added Salt	NO	NO	N/A
Added Sugar / artificial or natural sweeteners	NO	NO	N/A
Aspartame	NO	NO	N/A
BHA / BHT (E320 / E321)	NO	NO	N/A
Caffeine	YES	YES	Naturally occurring in tea
Colours (Artificial / Nature Identical / Natural / Smoked)	NO	NO	N/A
Dextrose	NO	NO	N/A
Other Seeds and Seed Derivatives (Poppy Seeds, Cotton Seeds, Sunflower Seeds)	NO	NO	N/A
Kiwi fruit	NO	NO	N/A

Product Code: P14476

Version: 1

Page 3 of 7

Committed to meeting quality standards. BRC Food Safety . FEMAS . FSMA . Informed Manufacturer. Soil Association
Organic . Halal . Kosher .

For a full range of our accreditations visit www.cambridgecommodities.com/quality-accreditations/certificates



+44 (0) 1353667258 | www.cambridgecommodities.com | enquiries@cambridgecommodities.com

Polyols (sugar alcohols)	NO	NO	N/A
Grapefruit	NO	NO	N/A
Sorbic Acid (E200, E203)	NO	NO	N/A
Any other Preservatives	NO	NO	N/A
Ethanol	NO	YES	NO
Honey	NO	NO	N/A
Lactose	NO	NO	N/A
Yeast and Yeast Derivatives	NO	YES	NO
All Animal Products (Beef, Pork, Poultry or other) and Derivatives (which may include growth/yield hormones, antibiotics etc.)	NO	NO	N/A
Bovine Products or Derivatives (which may include growth/yield hormones, antibiotics etc.)	NO	NO	N/A

Product Code: P14476

Version: 1

Page 4 of 7

**Committed to meeting quality standards. BRC Food Safety . FEMAS . FSMA . Informed Manufacturer. Soil Association
 Organic . Halal . Kosher .**

For a full range of our accreditations visit www.cambridgecommodities.com/quality-accreditations/certificates



+44 (0) 1353667258 | www.cambridgecommodities.com | enquiries@cambridgecommodities.com

Statements

<p>Confirmation of BSE / TSE Status This is to certify that this product complies with all relevant current UK and EU Legislative requirements in regard to Transmissible Spongiform Encephalopathies (TSE) and Bovine Spongiform Encephalopathy (BSE) for human food, and so is free of TSE/BSE.</p>	YES
<p>This is also to certify that, during the course of their manufacture, the above-mentioned product did not come into contact with any materials, which could be derived from TSE/BSE risk materials.</p>	YES
<p>Confirmation of GM Status This is to certify that this product is not manufactured from GM raw materials and is therefore not subject to labelling under current regulations.</p>	YES
<p>Confirmation of Non-Irradiation Status This is to certify that this product, whole or in part, has not been subjected to Ionising Radiation as per European Directives.</p>	YES
<p>Confirmation of Nandrolone Status This is to certify that this product, whole or in part, has not come into contact with Nandrolone or any of its precursors in any way.</p>	YES
<p>Confirmation of IOC Product Status This is to certify that this product, whole or in part, has not come into contact with any product/s, which is banned by the IOC (International Olympics Committee) and or WADA.</p>	YES
<p>Confirmation of Animal Testing Status This is to certify that all the products sold by Cambridge Commodities have not been tested on animals in any part of its manufacture in accordance with current regulations.</p>	YES
<p>Confirmation of Pesticides Status This is to certify that the above-mentioned product complies with the EU max residue limits (MRLs) on pesticides.</p>	YES
<p>Confirmation of Nanoparticles Status This is to certify that unless otherwise stated, the above-mentioned product is free of nanoparticles. Commission Recommendation, defines as follows: "Nanomaterial" means a natural, incidental or manufactured material containing particles, in an unbound state or as an aggregate or as an agglomerate and where, for 50 % or more of the particles in the number size distribution, one or more external dimensions is in the size range 1 nm - 100 nm".</p>	YES
<p>Packaging Status We hereby certify that the packaging used in the above-mentioned material conforms to EU regulations and subsequent amendments on food grade packaging</p>	YES
<p>Confirmation of PAH status This is to certify that the above-mentioned product complies with the max PAH limits set by the EU regulations</p>	YES

Product Code: P14476

Version: 1

Page 5 of 7

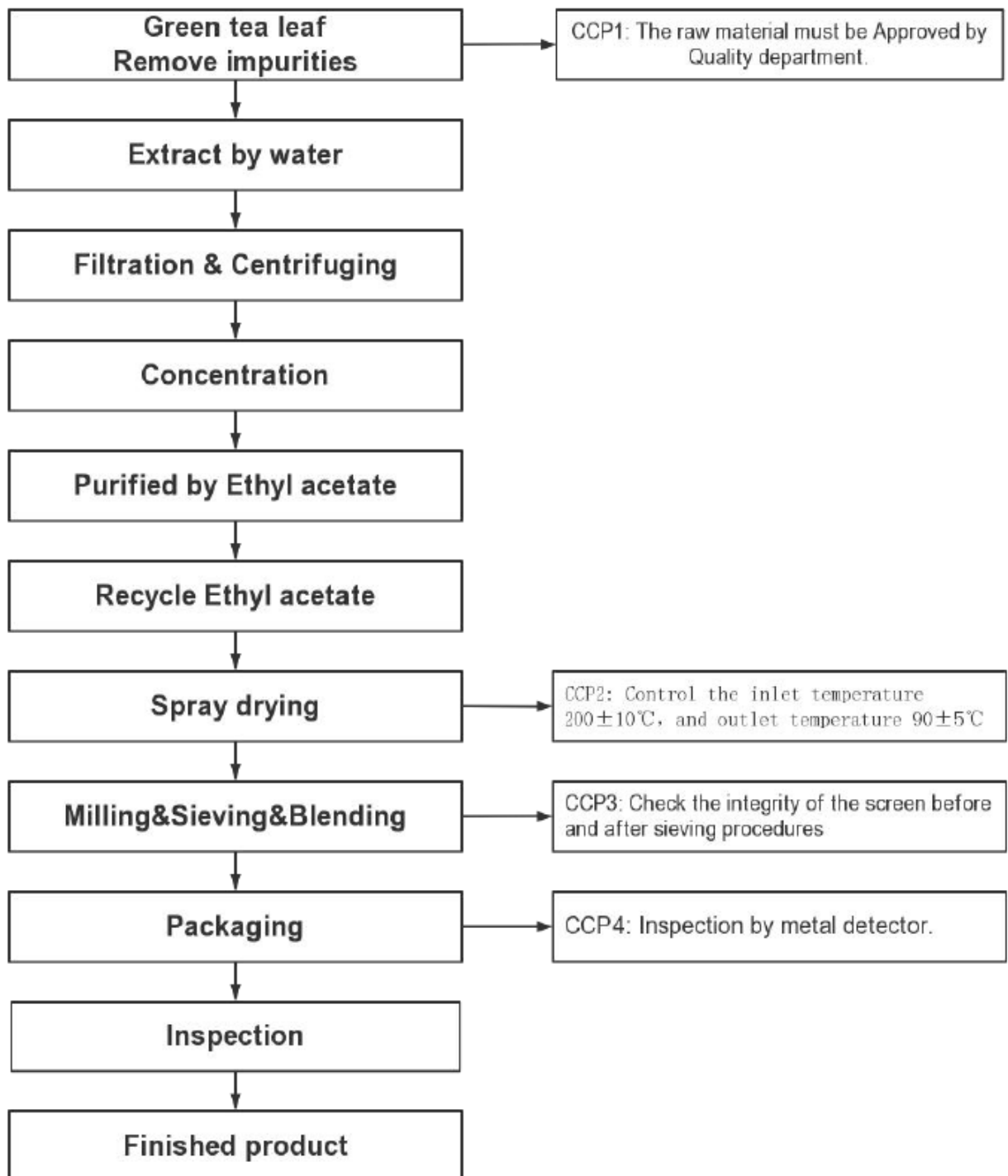
**Committed to meeting quality standards. BRC Food Safety . FEMAS . FSMA . Informed Manufacturer. Soil Association
Organic . Halal . Kosher .**

For a full range of our accreditations visit www.cambridgecommodities.com/quality-accreditations/certificates



+44 (0) 1353667258 | www.cambridgecommodities.com | enquiries@cambridgecommodities.com

Product Flow Chart



Product Code: P14476

Version: 1

Page 6 of 7

Committed to meeting quality standards. BRC Food Safety . FEMAS . FSMA . Informed Manufacturer. Soil Association
 Organic . Halal . Kosher .

 For a full range of our accreditations visit www.cambridgecommodities.com/quality-accreditations/certificates

 +44 (0) 1353667258 | www.cambridgecommodities.com | enquiries@cambridgecommodities.com

Material Safety Data Sheet

To download this product's material safety data sheet, please click [here](#) and search for the Cambridge Commodities product code. If there is no MSDS available, please follow the on-screen instructions to request one.

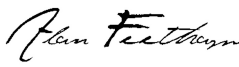

The Information provided in this document is subject to change and the batch specific certificate of analysis should always be referenced.

To be used as per local legislation.

Change History

Version	Change	Customer Notification required Yes / No
1	First Issue	N/A

Document Approval

Originator	Approver
 Alan Feetham QC Technician <small>x</small> 31/08/2022 11:55	 C White Senior Quality Specialist <small>x</small> 31/08/2022 12:09

